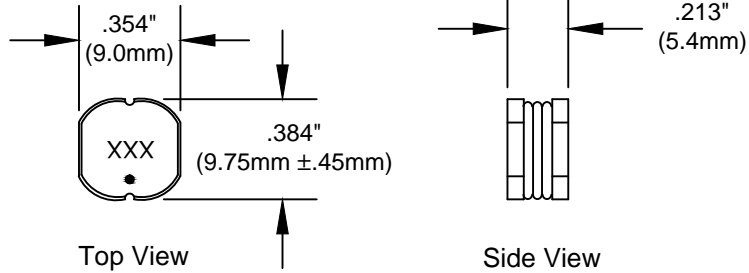


REVISIONS

DATE	REV	DESCRIPTION	APPV'D
04/26/02	-1	corrected tolerance, chg'd dim tol. to ref.	G.G.
09/27/02	-2	chg'd ele.specs. & dim. to meet alt. source	G.G.

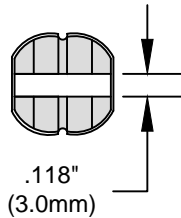
- ECONOMY INDUCTOR SERIES SUITABLE FOR SMPS AND RF APPLICATIONS.
- EXCELLENT PERFORMANCE IN A SMALL PACKAGE.
- LOW ABOVE BOARD HEIGHT (.224"/5.7mm MAXIMUM).
- WIDE RANGE OF INDUCTANCE VALUES 10μH - 820μH AND HIGH CURRENT RATINGS 240mA - 2.60ADC.



Tolerance : ±0.3mm unless otherwise specified.

"•" On top of Core Identifies Start

XXX = ID# is Inductance Value in Microhenries



Bottom View

Electrical Parameters

ID#	Max Dcr :	L	Idc Max
100	0.060 Ω	10.0 μH ±20%	2.60 A
150	0.080 Ω	15.0 μH ±20%	2.27 A
220	0.100 Ω	22.0 μH ±20%	1.95 A
330	0.120 Ω	33.0 μH ±20%	1.50 A
470	0.170 Ω	47.0 μH ±10%	1.28 A
560	0.190 Ω	56.0 μH ±10%	1.17 A
680	0.220 Ω	68.0 μH ±10%	1.11 A
820	0.250 Ω	82.0 μH ±10%	1.00 A
101	0.350 Ω	100.0 μH ±10%	0.97 A
151	0.470 Ω	150.0 μH ±10%	0.78 A
181	0.630 Ω	180.0 μH ±10%	0.72 A
221	0.730 Ω	220.0 μH ±10%	0.66 A
271	0.970 Ω	270.0 μH ±10%	0.57 A
331	1.150 Ω	330.0 μH ±10%	0.52 A
471	1.480 Ω	470.0 μH ±10%	0.42 A
561	1.900 Ω	560.0 μH ±10%	0.33 A
681	2.250 Ω	680.0 μH ±10%	0.28 A
821	2.550 Ω	820.0 μH ±10%	0.24 A



CUSTOM ENGINEERING MAGNETIC COMPONENTS
 Johnsburg, Illinois
 3521 N. Chapel Hill Rd. / McHenry, Illinois 60051

SCALE: None

APPROVED BY:

DRAWN BY Tjk

DATE: 06-18-01

Theodore J Klotz

REVISED

Mechanical - Electrical for Surface Mount SMI 4 Inductor

DRAWING NUMBER

SMI 4 -2